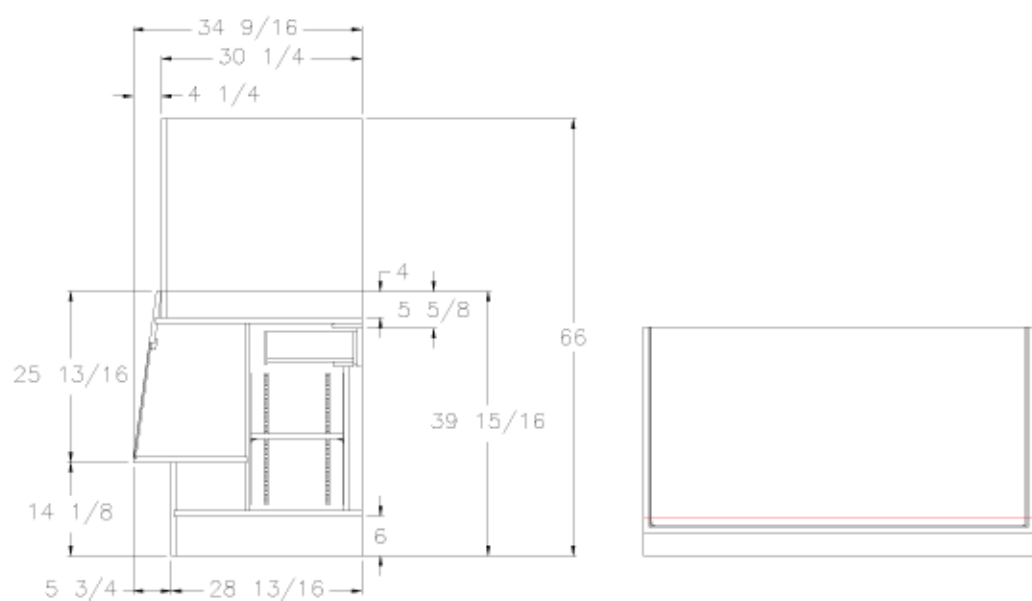
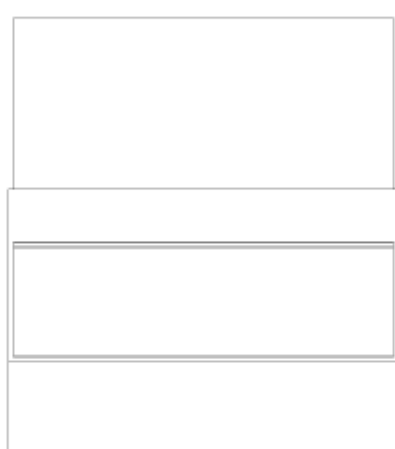


# 97000 Series Cake Decorating Booth



SECTION VIEW

TOP VIEW



FRONT VIEW



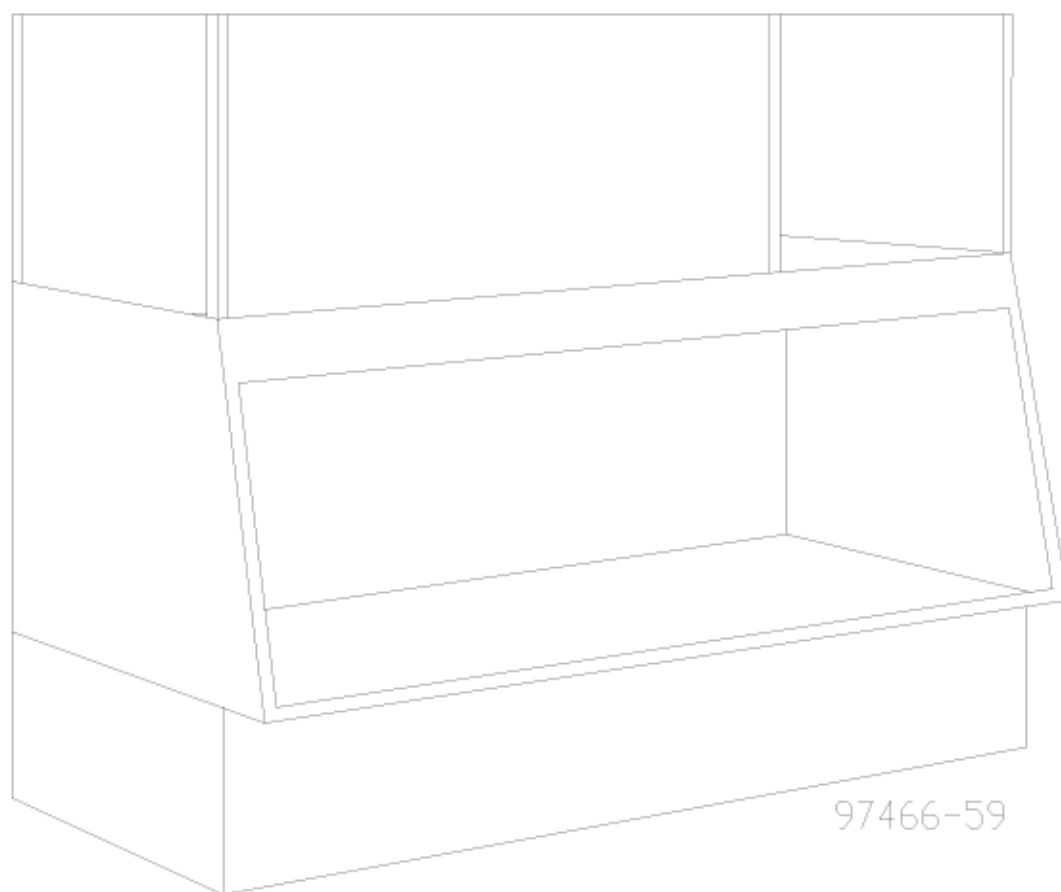
REAR VIEW

Model No.	Dimensions: L X W X H	Rows of Shelves	Est. Crated Weight	Case Options:
97466-59	59" X 34 5/8" X 66"	1	590 lbs.	1. HPL Finish Cover Front and Ends 2. Brasstone, Black or White Finish 3. "ETL" Sanitation Listed (Conforms to NSF STD-2)
97466-72	72" X 34 5/8" X 66"	1	675 lbs.	

Specifications Subject to change without notice



# 97000 Series Cake Decorating Booth



97466-59

### Features & Finishes:

- Working Height 36"
- White HPL Front, Sides, Working Surface and Drawers
- White Interior
- Two Drawers
- One Adjustable Wood Shelf
- Removable, Locking Plexiglass Display Front
- Light, Lamp, and Shield in Display Area
- Acrylic Breathe Guard
- Black HPL Base
- 12" Cord, Plug & Switch
- U.L. & C.U.L. Listed

